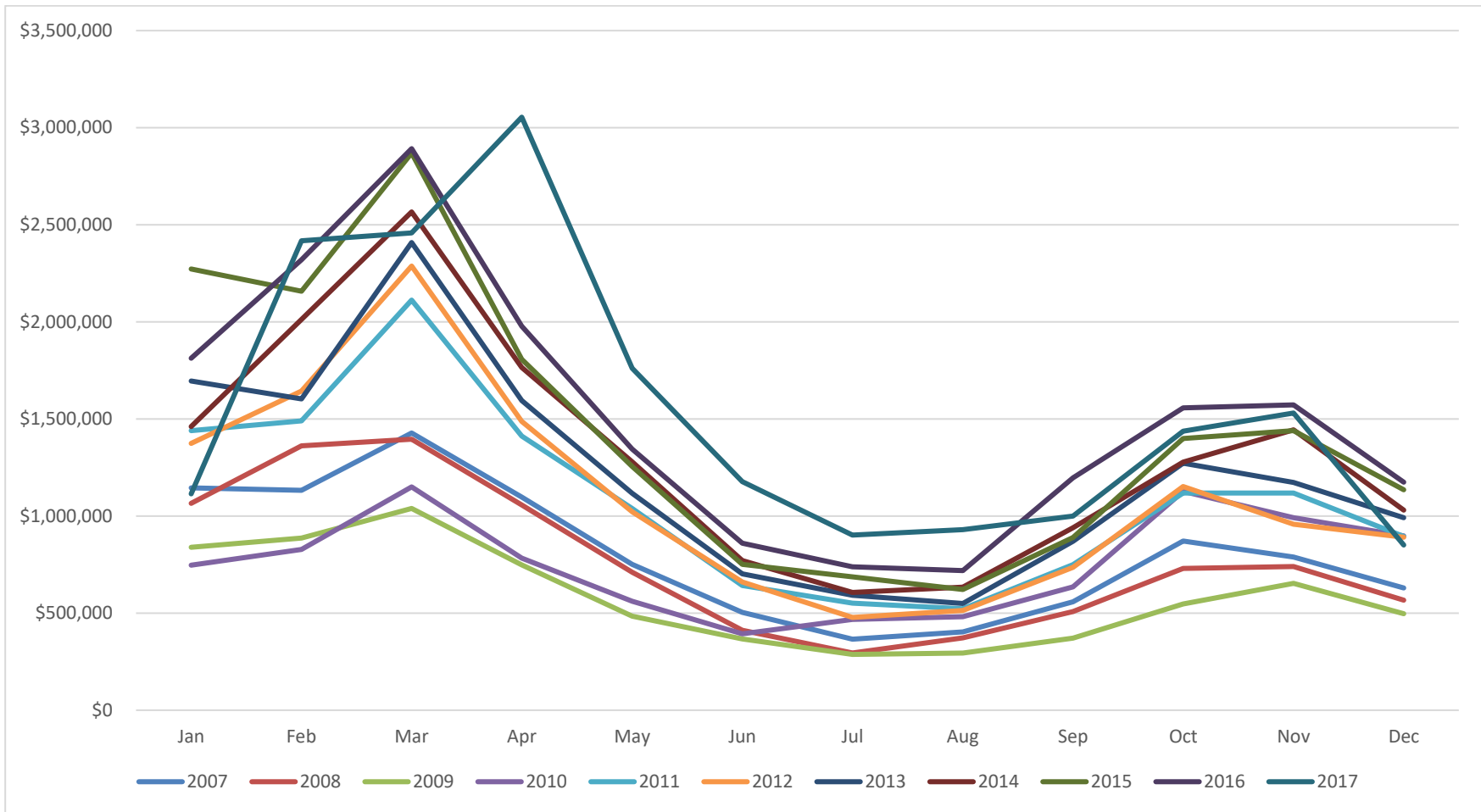


# Scottsdale Bed Tax Collections 2007-2017



### Scottsdale Bed Tax Collections

	2007	2008	2009	2010	2011	2012	2013	2014	2015	2016	2017*
<b>Jan</b>	\$1,145,222	\$1,065,634	\$838,870	\$746,527	\$1,439,693	\$1,373,586	\$1,695,722	\$1,461,090	\$2,271,788	\$1,813,107	\$1,115,043
<b>Feb</b>	\$1,132,446	\$1,361,716	\$886,188	\$828,485	\$1,490,790	\$1,643,740	\$1,602,606	\$2,013,208	\$2,158,027	\$2,320,417	\$2,417,432
<b>Mar</b>	\$1,427,745	\$1,395,675	\$1,039,177	\$1,150,123	\$2,112,133	\$2,287,454	\$2,408,496	\$2,566,323	\$2,869,673	\$2,892,090	\$2,458,315
<b>Apr</b>	\$1,098,091	\$1,057,041	\$748,393	\$783,160	\$1,412,304	\$1,486,879	\$1,595,317	\$1,764,997	\$1,806,673	\$1,977,341	\$3,054,168
<b>May</b>	\$751,622	\$710,413	\$484,786	\$560,558	\$1,038,318	\$1,022,196	\$1,117,220	\$1,278,507	\$1,256,091	\$1,345,248	\$1,761,758
<b>Jun</b>	\$504,334	\$412,163	\$366,474	\$393,529	\$642,135	\$660,005	\$702,513	\$770,464	\$751,742	\$860,598	\$1,176,941
<b>Jul</b>	\$365,852	\$294,899	\$287,445	\$468,069	\$551,811	\$477,816	\$592,219	\$606,581	\$686,517	\$739,002	\$902,085
<b>Aug</b>	\$403,225	\$373,040	\$293,820	\$481,170	\$522,553	\$513,365	\$549,687	\$633,261	\$621,760	\$719,101	\$929,939
<b>Sep</b>	\$558,736	\$508,832	\$371,649	\$634,850	\$749,610	\$736,410	\$869,451	\$939,775	\$889,778	\$1,196,588	\$999,185
<b>Oct</b>	\$871,790	\$730,114	\$547,610	\$1,126,767	\$1,118,386	\$1,152,324	\$1,272,297	\$1,278,397	\$1,398,632	\$1,557,281	\$1,436,557
<b>Nov</b>	\$789,492	\$739,333	\$653,810	\$990,792	\$1,118,739	\$958,248	\$1,173,582	\$1,443,948	\$1,439,290	\$1,572,604	\$1,530,091
<b>Dec</b>	\$629,853	\$567,325	\$496,390	\$897,368	\$895,391	\$891,379	\$991,024	\$1,031,086	\$1,135,306	\$1,173,835	\$850,806
<b>Annual Total</b>	\$9,678,408	\$9,216,185	\$7,014,612	\$9,061,398	\$13,091,863	\$13,203,402	\$14,570,134	\$15,787,637	\$17,285,277	\$18,167,212	\$18,632,320

Source: City of Scottsdale Economic Development Department

\*In 2017, the Arizona Department of Revenue began collecting and managing the disbursement of all taxes, resulting in a lag in data that has impacted monthly totals. Previously, the City of Scottsdale was in charge of collections.